



# Travel Solutions



## Roof Bar Application Guide


This application guide covers the ever expanding range of **EQUIP** branded roof bars, incorporating over 30 new applications in 2017.

The **EQUIP** brand recognises the demand for high quality, safe and dependable car accessories. Designed using unparalleled technology this range meets the highest standards on the market. To ensure a safe fit, each kit is actually tested on every car within its application.

### Features and Benefits

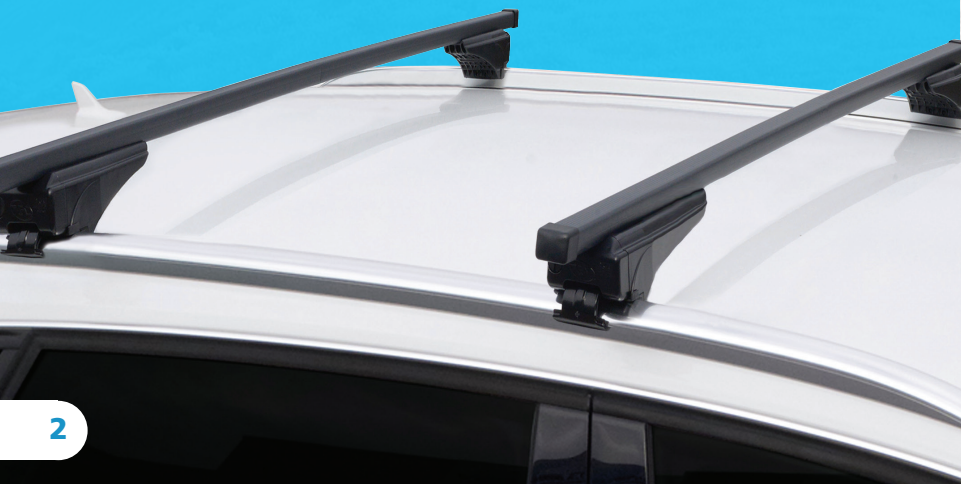
- Pre-assembled classic roof bars
- Complete with assembly kit
- Easy to install
- Steel protected by a rubber profile
- Treated to resist both UV and scratches
- TUV and GS certified
- Made in Italy
- Stylish and modern design

Conforms to the safety regulations  
 XPISO/PAS 11154-A 09/2007



### Contents

Alfa Romeo	3
Audi	3
BMW	3-4
Cadillac	4
Chevrolet/Daewoo	4
Citroen	4-5
Dacia	5
Daihatsu	5
DR	5
Fiat	5-6
Ford	6
Honda	6-7
Hyundai	7-8
Innocenti	7
Jaguar	7
Kia	7-8
Lada	8
Lancia	8
Land Rover	8
Lexus	8
Mazda	8
Mercedes	8-9
Mini	9
Mitsubishi	9
Nissan	9
Peugeot	9-10
Renault	10-11
Rover	11
Saab	11
Seat	11
Skoda	12
SSangyong	12
Subaru	12
Suzuki	12
Tata	12
Toyota	13-12
Vauxhall/Opel	13-14
Volkswagen	14-15
Volvo	15



Manufacturer	Model	Body Type	Additional Information	Registration		Part No.	Fixpoints
				From	To		
ALFA ROMEO	75	4 Door		1985	1992	CLA007	NORMAL FIXING CLAMP
ALFA ROMEO	145	3 Door		1994	2000	CLA002	SPECIAL FIXING CLAMP
ALFA ROMEO	146	4 Door		1995	2001	CLA002	SPECIAL FIXING CLAMP
ALFA ROMEO	147	5 Door		2000	2010	CLA122	NORMAL FIXING CLAMP
ALFA ROMEO	156	4 Door		1997	2005	CLA002	SPECIAL FIXING CLAMP
ALFA ROMEO	156	Estate	With Railings	2000	2007	CLA951	OPEN RAILS
ALFA ROMEO	156	Estate	With/Without Railings	2000	2006	CLA002	SPECIAL FIXING CLAMP
ALFA ROMEO	159	4 Door		2005	2011	CLA095	NORMAL FIXING CLAMP
ALFA ROMEO	159	Estate	With Railings	2006	2011	CLA951	OPEN RAILS
ALFA ROMEO	159	Estate	With/Without Railings	2006	2011	CLA095	NORMAL FIXING CLAMP
ALFA ROMEO	164	4 Door		1987	1998	CLA002	SPECIAL FIXING CLAMP
ALFA ROMEO	166	4 Door		1998	2007	CLA014	NORMAL FIXING CLAMP
ALFA ROMEO	Giulietta	5 Door		2010		CLA122	NORMAL FIXING CLAMP
AUDI	80	4 Door		1986	1991	CLA005	NORMAL FIXING CLAMP
AUDI	80	4 Door		1991	1995	CLA005	NORMAL FIXING CLAMP
AUDI	100	4 Door		1991	1994	CLA005	NORMAL FIXING CLAMP
AUDI	100 Avant	Estate		1991	1994	CLA951	OPEN RAILS
AUDI	80 Avant	Estate		1991	1995	CLA951	OPEN RAILS
AUDI	A3	3 Door		1996	2003	CLA005	NORMAL FIXING CLAMP
AUDI	A3	5 Door		1996	2003	CLA005	NORMAL FIXING CLAMP
AUDI	A3	3 Door		2003	2012	CLA073	NORMAL FIXING CLAMP
AUDI	A3 Sportback	5 Door	With/Without Railings	2004	2012	CLA005	NORMAL FIXING CLAMP
AUDI	A3 Sportback	5 Door	Integrated Rails	2004	2008	CLA962	INTEGRATED RAILS
AUDI	A3 Sportback	5 Door	Integrated Rails	2008	2012	CLA962	INTEGRATED RAILS
AUDI	A3 Sportback	5 Door	Integrated Rails	2012		CLA962	INTEGRATED RAILS
AUDI	A3 Sportback	5 Door	With/Without Railings	2012		CLA141	NORMAL FIXING CLAMP
AUDI	A4	4 Door		1995	2000	CLA004	NORMAL FIXING CLAMP
AUDI	A4	4 Door		2001	2004	CLA004	NORMAL FIXING CLAMP
AUDI	A4	4 Door		2008	2015	CLA110	NORMAL FIXING CLAMP
AUDI	A4 Avant	Estate		1995	2001	CLA951	OPEN RAILS
AUDI	A4 Avant	Estate		2001	2004	CLA951	OPEN RAILS
AUDI	A4 Avant	Estate		2004	2008	CLA951	OPEN RAILS
AUDI	A4 Avant	Estate	Integrated Rails	2008	2015	CLA962	INTEGRATED RAILS
AUDI	A4 Allroad	Estate	With Railings	2009	2016	CLA951	OPEN RAILS
AUDI	A6	4 Door		1994	1997	CLA005	NORMAL FIXING CLAMP
AUDI	A6	4 Door		1997	2004	CLA005	NORMAL FIXING CLAMP
AUDI	A6	4 Door		2004	2011	CLA022	NORMAL FIXING CLAMP
AUDI	A6 Avant	Estate		1994	1997	CLA951	OPEN RAILS
AUDI	A6 Avant	Estate		1998	2005	CLA951	OPEN RAILS
AUDI	A6 Avant	Estate	Integrated Rails	2005	2011	CLA962	INTEGRATED RAILS
AUDI	A6 Avant	Estate	Integrated Rails	2011		CLA962	INTEGRATED RAILS
AUDI	A6 Allroad	Estate		1999	2005	CLA951	OPEN RAILS
AUDI	A6 Allroad	Estate	With Railings	2012		CLA962	INTEGRATED RAILS
AUDI	Q3	SUV	Integrated Rails	2011		CLA962	INTEGRATED RAILS
AUDI	Q7	SUV	Integrated Rails	2006	2009	CLA962	INTEGRATED RAILS
AUDI	Q7	SUV	Integrated Rails	2009	2015	CLA962	INTEGRATED RAILS
BMW	Serie 1	3 Door		2007	2012	CLA096	FIX POINT
BMW	Serie 1	3 Door		2012		CLA096	FIX POINT
BMW	Serie 1	5 Door		2004	2011	CLA096	FIX POINT
BMW	Serie 1	5 Door		2011		CLA096	FIX POINT
BMW	Serie 2 Active Tourer	MPV	Integrated Rails	2014		CLA962	INTEGRATED RAILS
BMW	Serie 2 Gran Tourer	MPV	Integrated Rails	2015		CLA962	INTEGRATED RAILS

Manufacturer	Model	Body Type	Additional Information	Registration		Part No.	Fixpoints
				From	To		
BMW	Serie 3	4 Door		1990	1998	CLA002	SPECIAL FIXING CLAMP
BMW	Serie 3	4 Door	Fixed points	1998	2005	CLA604	FIX POINT
BMW	Serie 3	4 Door		2005	2011	CLA096	FIX POINT
BMW	Serie 3	4 Door		2012		CLA096	FIX POINT
BMW	Serie 3 Coupč	3 Door		1992	1999	CLA014	NORMAL FIXING CLAMP
BMW	Serie 3 Coupč	3 Door		2005	2013	CLA096	FIX POINT
BMW	Serie 3 Touring	Estate	With Railings	1995	1999	CLA951	OPEN RAILS
BMW	Serie 3 Touring	Estate	With Railings	1999	2005	CLA951	OPEN RAILS
BMW	Serie 3 Touring	Estate	With Railings	2005	2010	CLA951	OPEN RAILS
BMW	Serie 3 Touring	Estate	With/Without Railings	2005	2012	CLA096	FIX POINT
BMW	Serie 3 Touring	Estate	Integrated Rails	2010	2012	CLA962	INTEGRATED RAILS
BMW	Serie 3 Touring	Estate	Integrated Rails	2012		CLA962	INTEGRATED RAILS
BMW	Serie 4 Coupč	2		2013		CLA096	FIX POINT
BMW	Serie 4 Gran Coupč	4 Door		2014		CLA096	FIX POINT
BMW	Serie 5	4 Door		1988	1995	CLA007	NORMAL FIXING CLAMP
BMW	Serie 5	4 Door		1996	2003	CLA007	NORMAL FIXING CLAMP
BMW	Serie 5	4 Door		2003	2010	CLA022	NORMAL FIXING CLAMP
BMW	Serie 5 Touring	Estate	With Railings	1997	2004	CLA951	OPEN RAILS
BMW	Serie 5 Touring	Estate	With/Without Railings	2004	2010	CLA022	NORMAL FIXING CLAMP
BMW	Serie 5 Touring	Estate	With Railings	2004	2010	CLA951	OPEN RAILS
BMW	Serie 5 Touring	Estate	Integrated Rails	2010		CLA962	INTEGRATED RAILS
BMW	X1	SUV	Integrated Rails	2009	2015	CLA962	INTEGRATED RAILS
BMW	X1	SUV	Integrated Rails	2015		CLA962	INTEGRATED RAILS
BMW	X3	SUV	Integrated Rails	2010		CLA962	INTEGRATED RAILS
BMW	X5	SUV	Integrated Rails	2007	2013	CLA962	INTEGRATED RAILS
CADILLAC	SRX	SUV	With Railings	2010		CLA962	INTEGRATED RAILS
CHEVROLET / DAEWOO	Captiva	SUV		2006	2015	CLA951	OPEN RAILS
CHEVROLET / DAEWOO	Evanda	4 Door		2000	2006	CLA005	NORMAL FIXING CLAMP
CHEVROLET / DAEWOO	Kalos	5 Door		2002	2007	CLA005	NORMAL FIXING CLAMP
CHEVROLET / DAEWOO	Lanos	4 Door		1997	2002	CLA005	NORMAL FIXING CLAMP
CHEVROLET / DAEWOO	Lanos	5 Door		1997	2002	CLA005	NORMAL FIXING CLAMP
CHEVROLET / DAEWOO	Matiz II	5 Door		2005	2009	CLA099	NORMAL FIXING CLAMP
CHEVROLET / DAEWOO	Nexia	3 Door		1994	1997	CLA001	SPECIAL FIXING CLAMP
CHEVROLET / DAEWOO	Nexia	4 Door		1994	1997	CLA001	SPECIAL FIXING CLAMP
CHEVROLET / DAEWOO	Nexia	5 Door		1994	1997	CLA001	SPECIAL FIXING CLAMP
CHEVROLET / DAEWOO	Nubira I	4 Door		1997	2002	CLA005	NORMAL FIXING CLAMP
CHEVROLET / DAEWOO	Nubira I	5 Door		1997	2002	CLA005	NORMAL FIXING CLAMP
CHEVROLET / DAEWOO	Nubira I	Estate	With Railings	1997	2004	CLA951	OPEN RAILS
CHEVROLET / DAEWOO	Nubira II	Estate	With Railings	2005	2009	CLA951	OPEN RAILS
CHEVROLET / DAEWOO	Orlando	MPV		2010	2015	CLA078	SPECIAL FIX POINT
CHEVROLET / DAEWOO	Tacuma	SUV		2000	2009	CLA951	OPEN RAILS
CITROËN	AX	5 Door		1986	1998	CLA004	NORMAL FIXING CLAMP

Manufacturer	Model	Body Type	Additional Information	Registration		Part No.	Fixpoints
				From	To		
CITROËN	Berlingo I	MPV-VAN		1997	2008	CLA081	NORMAL FIXING CLAMP
CITROËN	C1 I	5 Door		2005	2014	CLA014	NORMAL FIXING CLAMP
CITROËN	C1 II	5 Door		2014		CLA014	NORMAL FIXING CLAMP
CITROËN	C3 I	5 Door		2002	2009	CLA061	NORMAL FIXING CLAMP
CITROËN	C3 Picasso	MPV	With Railings	2009		CLA951	OPEN RAILS
CITROËN	C4 Aircross	SUV	Integrated Rails	2012		CLA962	INTEGRATED RAILS
CITROËN	C4 I Berlina	5 Door		2004	2010	CLA049	FIX POINT
CITROËN	C4 I Coupč	3 Door		2004	2010	CLA049	FIX POINT
CITROËN	C4 II	5 Door		2010		CLA132	NORMAL FIXING CLAMP
CITROËN	C4 Picasso I	MPV	5 Seats/With/Without Railings/No Sun Roof	2007	2013	CLA100	NORMAL FIXING CLAMP
CITROËN	C5 I	5 Door		2001	2008	CLA601	FIX POINT
CITROËN	C5 II	4 Door		2008		CLA085	FIX POINT
CITROËN	C5 II Tourer	Estate	With Railings	2008		CLA951	OPEN RAILS
CITROËN	C6	4 Door		2005	2012	CLA085	FIX POINT
CITROËN	Evasion	MPV		1994	2002	CLA021	SPECIAL FIXING CLAMP
CITROËN	Grand C4 Picasso I	MPV	7 Seats/With/Without Railings/No Sun Roof	2006	2013	CLA100	NORMAL FIXING CLAMP
CITROËN	Saxo	5 Door		1996	2003	CLA004	NORMAL FIXING CLAMP
CITROËN	Xantia	Estate		1995	2001	CLA021	SPECIAL FIXING CLAMP
CITROËN	Xantia	5 Door		1993	2001	CLA003	NORMAL FIXING CLAMP
CITROËN	XM	4 Door		1989	2000	CLA023	NORMAL FIXING CLAMP
CITROËN	XM Break	Estate		1989	2000	CLA951	OPEN RAILS
CITROËN	Xsara	5 Door		1997	2005	CLA018	NORMAL FIXING CLAMP
CITROËN	Xsara Picasso	MPV		1999	2010	CLA081	NORMAL FIXING CLAMP
CITROËN	ZX Break	Estate		1993	1998	CLA951	OPEN RAILS
DACIA	Dokker	MPV		2013		CLA951	OPEN RAILS
DACIA	Logan I	4 Door		2004	2012	CLA056	SPECIAL FIX POINT
DACIA	Logan I MCV	Estate		2007	2012	CLA951	OPEN RAILS
DACIA	Logan II MCV	Estate		2013		CLA951	OPEN RAILS
DACIA	Sandero I	5 Door		2008	2012	CLA056	SPECIAL FIX POINT
DACIA	Sandero Stepway I	SUV		2009	2012	CLA951	OPEN RAILS
DACIA	Sandero Stepway II	SUV		2013		CLA951	OPEN RAILS
DAIHATSU	Cuore V	5 Door		1998	2002	CLA004	NORMAL FIXING CLAMP
DAIHATSU	Cuore VI	5 Door		2003	2006	CLA007	NORMAL FIXING CLAMP
DAIHATSU	Sirion	5 Door		1998	2005	CLA005	NORMAL FIXING CLAMP
DAIHATSU	Terios	SUV	"DB - "DX"	1997	2005	CLA004	NORMAL FIXING CLAMP
DAIHATSU	Terios II	SUV	With Railings	2005		CLA951	OPEN RAILS
DAIHATSU	Terios II	SUV	With/Without Railings	2006		CLA022	NORMAL FIXING CLAMP
DR	CityCross	MPV		2013		CLA951	OPEN RAILS
DR	DR 5	SUV	With Railings	2007		CLA951	OPEN RAILS
FIAT	500L	MPV		2012		CLA129	NORMAL FIXING CLAMP
FIAT	500L Trekking	MPV		2012		CLA129	NORMAL FIXING CLAMP
FIAT	500L Living	MPV		2013		CLA129	NORMAL FIXING CLAMP
FIAT	Bravo II	5 Door		2007	2014	CLA103	NORMAL FIXING CLAMP
FIAT	Croma	5 Door		1985	1996	CLA002	SPECIAL FIXING CLAMP
FIAT	Grande Punto	3 Door		2005	2012	CLA090	NORMAL FIXING CLAMP
FIAT	Grande Punto	5 Door		2005	2012	CLA089	NORMAL FIXING CLAMP
FIAT	Marea Weekend	Estate		1996	2007	CLA951	OPEN RAILS
FIAT	Palio Weekend	Estate		1996		CLA951	OPEN RAILS
FIAT	Panda III	5 Door	Integrated Rails	2012		CLA962	INTEGRATED RAILS
FIAT	Panda III Cross	5 Door	With Railings	2014		CLA951	OPEN RAILS

Manufacturer	Model	Body Type	Additional Information	Registration		Part No.	Fixpoints
				From	To		
FIAT	Punto	3 Door		2012		CLA090	NORMAL FIXING CLAMP
FIAT	Punto	5 Door		2012		CLA089	NORMAL FIXING CLAMP
FIAT	Punto Evo	3 Door		2009	2012	CLA090	NORMAL FIXING CLAMP
FIAT	Punto Evo	5 Door		2009	2012	CLA089	NORMAL FIXING CLAMP
FIAT	Punto II	3 Door		1999	2010	CLA044	SPECIAL FIX POINT
FIAT	Punto II	5 Door		1999	2010	CLA045	SPECIAL FIX POINT
FIAT	Regata Weekend	Estate		1984	1990	CLA951	OPEN RAILS
FIAT	Sedici	SUV	With Railings	2006		CLA951	OPEN RAILS
FIAT	Ulysse I	MPV		1994	2002	CLA021	SPECIAL FIXING CLAMP
FORD	Escort V	4 Door		1990	2000	CLA023	NORMAL FIXING CLAMP
FORD	Escort V	5 Door		1990	2000	CLA023	NORMAL FIXING CLAMP
FORD	Escort V	Estate		1990	2000	CLA951	OPEN RAILS
FORD	Fiesta III	5 Door		1989	1997	CLA004	NORMAL FIXING CLAMP
FORD	Fiesta IV	5 Door		1995	2001	CLA004	NORMAL FIXING CLAMP
FORD	Fiesta V	3 Door		2002	2008	CLA065	NORMAL FIXING CLAMP
FORD	Fiesta V	5 Door		2002	2008	CLA076	NORMAL FIXING CLAMP
FORD	Fiesta VI	5 Door		2008		CLA005	NORMAL FIXING CLAMP
FORD	Focus C-Max / C-Max I	MPV	No sun roof	2003	2010	CLA613	FIX POINT
FORD	Focus I	3 Door		1998	2004	CLA041	NORMAL FIXING CLAMP
FORD	Focus I	5 Door		1998	2004	CLA037	NORMAL FIXING CLAMP
FORD	Focus I	Estate	With Railings	1998	2005	CLA951	OPEN RAILS
FORD	Focus I	Estate	With/Without Railings	1998	2004	CLA037	NORMAL FIXING CLAMP
FORD	Focus II	3 Door		2004	2011	CLA058	FIX POINT
FORD	Focus II	5 Door		2004	2011	CLA058	FIX POINT
FORD	Focus II	Estate	With Railings	2004	2011	CLA951	OPEN RAILS
FORD	Focus II	Estate	Track railing	2004	2007	CLA083	T RAILS
FORD	Focus II	Estate	With/Without Railings	2004	2007	CLA058	FIX POINT
FORD	Focus II	Estate	With/Without Railings	2008	2011	CLA058	FIX POINT
FORD	Focus III	5 Door		2011		CLA117	NORMAL FIXING CLAMP
FORD	Focus III	Estate	With-w/o Integrated Rails	2011		CLA118	NORMAL FIXING CLAMP
FORD	Fusion	MPV		2002	2012	CLA076	NORMAL FIXING CLAMP
FORD	Galaxy II	MPV	With/Without Railings	2006	2010	CLA083	T RAILS
FORD	Grand C-Max II / C-Max7	MPV	7 seats	2010		CLA951	OPEN RAILS
FORD	Kuga I	SUV	With Railings	2008	2012	CLA951	OPEN RAILS
FORD	Kuga I	SUV	With/Without Railings	2008	2012	CLA074	NORMAL FIXING CLAMP
FORD	Mondeo I	Estate	With Railings	1993	1996	CLA951	OPEN RAILS
FORD	Mondeo II	Estate	With Railings	1996	2000	CLA951	OPEN RAILS
FORD	Mondeo III	4 Door		2001	2007	CLA605	FIX POINT
FORD	Mondeo III	5 Door		2001	2007	CLA605	FIX POINT
FORD	Mondeo III	Estate	With Railings	2001	2007	CLA951	OPEN RAILS
FORD	Mondeo IV	4 Door		2007	2014	CLA101	NORMAL FIXING CLAMP
FORD	Mondeo IV	5 Door		2007	2014	CLA101	NORMAL FIXING CLAMP
FORD	Mondeo IV	Estate	With/Without Railings	2007	2014	CLA101	NORMAL FIXING CLAMP
FORD	Mondeo IV	Estate	With Railings	2007	2014	CLA951	OPEN RAILS
FORD	Orion III	4 Door		1990	1994	CLA023	NORMAL FIXING CLAMP
FORD	Scorpio	4 Door		1985	1998	CLA023	NORMAL FIXING CLAMP
FORD	S-Max I	MPV	No sun roof	2006	2015	CLA092	FIX POINT
FORD	Tourneo Courier	MPV	With Railings	2014		CLA951	OPEN RAILS
FORD	Transit Courier	VAN	With Railings	2014		CLA951	OPEN RAILS
HONDA	Accord Tourer VII	Estate	With/Without Railings	2003	2008	CLA074	NORMAL FIXING CLAMP
HONDA	Accord Tourer VII	Estate	With Railings	2003	2008	CLA951	OPEN RAILS

Manufacturer	Model	Body Type	Additional Information	Registration		Part No.	Fixpoints
				From	To		
HONDA	Accord Tourer VIII	Estate	With Railings	2008		CLA951	OPEN RAILS
HONDA	Accord V - VI - VII	4 Door		1995	2002	CLA005	NORMAL FIXING CLAMP
HONDA	Accord VII	4 Door		2003	2008	CLA074	NORMAL FIXING CLAMP
HONDA	Civic VI	5 Door		1994	2000	CLA014	NORMAL FIXING CLAMP
HONDA	Civic VI Aerodeck	Estate		1998	2001	CLA951	OPEN RAILS
HONDA	Civic VII	5 Door		2001	2006	CLA005	NORMAL FIXING CLAMP
HONDA	Civic IX Tourer	Estate	Integrated Rails	2013		CLA962	INTEGRATED RAILS
HONDA	Concerto	4 Door		1988	1994	CLA014	NORMAL FIXING CLAMP
HONDA	Concerto	5 Door		1988	1994	CLA014	NORMAL FIXING CLAMP
HONDA	CR-V I	SUV	With Railings	1995	2002	CLA951	OPEN RAILS
HONDA	CR-V II	SUV		2002	2006	CLA088	FIX POINT
HONDA	CR-V III	SUV		2007	2012	CLA104	FIX POINT
HONDA	Jazz II	MPV	With-w/o sun roof	2008	2015	CLA007	NORMAL FIXING CLAMP
HONDA	Stream	MPV		2001	2006	CLA022	NORMAL FIXING CLAMP
HYUNDAI	Accent I	4 Door		1995	1999	CLA004	NORMAL FIXING CLAMP
HYUNDAI	Accent I	5 Door		1995	1999	CLA004	NORMAL FIXING CLAMP
HYUNDAI	Accent II	4 Door		2000	2005	CLA005	NORMAL FIXING CLAMP
HYUNDAI	Accent II	5 Door		2000	2005	CLA005	NORMAL FIXING CLAMP
HYUNDAI	Accent III	5 Door		2006	2010	CLA007	NORMAL FIXING CLAMP
HYUNDAI	Atos	5 Door	With Railings	1998	2008	CLA951	OPEN RAILS
HYUNDAI	Atos Prime	5 Door	With/Without Railings	1999	2008	CLA007	NORMAL FIXING CLAMP
HYUNDAI	Getz	5 Door		2002	2009	CLA014	NORMAL FIXING CLAMP
HYUNDAI	i10	5 Door		2007	2013	CLA014	NORMAL FIXING CLAMP
HYUNDAI	i10	5 Door		2013		CLA120	NORMAL FIXING CLAMP
HYUNDAI	i20 I	5 Door		2008	2014	CLA004	NORMAL FIXING CLAMP
HYUNDAI	i20 II	5 Door		2014		CLA615	FIX POINT
HYUNDAI	i30	5 Door		2007	2011	CLA615	FIX POINT
HYUNDAI	i30	3 Door		2012		CLA615	FIX POINT
HYUNDAI	i30	5 Door		2012		CLA615	FIX POINT
HYUNDAI	i30 CW	Estate		2007	2012	CLA951	OPEN RAILS
HYUNDAI	i30 CW	Estate		2012		CLA121	FIX POINT
HYUNDAI	i40 CW	Estate		2011		CLA121	FIX POINT
HYUNDAI	ix20	MPV	With-w/o sun roof	2010		CLA120	NORMAL FIXING CLAMP
HYUNDAI	ix35	SUV	Integrated Rails	2010	2015	CLA962	INTEGRATED RAILS
HYUNDAI	Lantra II	5 Door		1995	2000	CLA003	NORMAL FIXING CLAMP
HYUNDAI	Lantra II	Estate		1996	2000	CLA951	OPEN RAILS
HYUNDAI	Tucson I	SUV		2004	2010	CLA951	OPEN RAILS
INNOCENTI	Elba	Estate		1991	1997	CLA951	OPEN RAILS
JAGUAR	X-Type	Estate	With Railings	2003	2009	CLA951	OPEN RAILS
KIA	Carnival / Grand Carnival III	MPV		2005	2010	CLA951	OPEN RAILS
KIA	Carens	MPV	Integrated Rails	2013		CLA962	INTEGRATED RAILS
KIA	Cee'd	5 Door		2007	2012	CLA615	FIX POINT
KIA	Cee'd	5 Door		2012		CLA615	FIX POINT
KIA	Cee'd Sporty Wagon	Estate		2007	2012	CLA951	OPEN RAILS
KIA	Cee'd Sporty Wagon	Estate	Integrated Rails	2012		CLA962	INTEGRATED RAILS
KIA	Clarus	Estate		1998	2001	CLA951	OPEN RAILS
KIA	Picanto I	5 Door		2004	2010	CLA007	NORMAL FIXING CLAMP
KIA	Picanto II	5 Door		2011		CLA120	NORMAL FIXING CLAMP
KIA	Pride	Estate		1999	2000	CLA951	OPEN RAILS
KIA	Pro-Cee'd	3 Door		2008	2012	CLA615	FIX POINT
KIA	Pro-Cee'd	3 Door		2013		CLA615	FIX POINT

Manufacturer	Model	Body Type	Additional Information	Registration		Part No.	Fixpoints
				From	To		
KIA	Rio I	5 Door		2000	2005	CLA070	NORMAL FIXING CLAMP
KIA	Rio I	Estate	With Railings	2000	2005	CLA951	OPEN RAILS
KIA	Rio III	5 Door		2012		CLA074	NORMAL FIXING CLAMP
KIA	Shuma	4 Door		1998	2004	CLA005	NORMAL FIXING CLAMP
KIA	Shuma	5 Door		1998	2004	CLA005	NORMAL FIXING CLAMP
KIA	Sorento I	SUV	With Railings	2002	2009	CLA951	OPEN RAILS
KIA	Sorento II	SUV	With Railings	2009	2015	CLA951	OPEN RAILS
KIA	Sportage I	SUV	With Railings	1994	2004	CLA951	OPEN RAILS
KIA	Sportage II	SUV	With Railings	2004	2009	CLA951	OPEN RAILS
KIA	Sportage III	SUV	Integrated Rails	2010	2015	CLA962	INTEGRATED RAILS
KIA	Venga	MPV	With-w/o sun roof	2010		CLA120	NORMAL FIXING CLAMP
LADA	111	Estate		1998		CLA951	OPEN RAILS
LANCIA	K	4 Door		1994	2001	CLA003	NORMAL FIXING CLAMP
LANCIA	Thema I	4 Door		1984	1994	CLA002	SPECIAL FIXING CLAMP
LANCIA	Z	MPV		1995	2002	CLA021	SPECIAL FIXING CLAMP
LAND ROVER	Freelander 2	SUV	With Railings	2007		CLA951	OPEN RAILS
LEXUS	IS 200	4 Door		1999	2005	CLA007	NORMAL FIXING CLAMP
LEXUS	IS II	4 Door		2005	2013	CLA064	NORMAL FIXING CLAMP
MAZDA	121 III	5 Door		1996	2003	CLA004	NORMAL FIXING CLAMP
MAZDA	2 I	5 Door		2002	2004	CLA075	FIX POINT
MAZDA	2 I	5 Door		Sept 2004	2007	CLA014	NORMAL FIXING CLAMP
MAZDA	2 II	3 Door		2007	2014	CLA615	FIX POINT
MAZDA	2 II	5 Door		2007	2014	CLA615	FIX POINT
MAZDA	3 I	5 Door	No sun roof	2003	2009	CLA613	FIX POINT
MAZDA	3 II	5 Door	No sun roof	2009	2013	CLA613	FIX POINT
MAZDA	5 I	MPV	With Railings	2005	2010	CLA951	OPEN RAILS
MAZDA	5 II	MPV	With Railings	2010		CLA951	OPEN RAILS
MAZDA	6 I	4 Door		2002	2007	CLA610	FIX POINT
MAZDA	6 I	5 Door		2002	2007	CLA610	FIX POINT
MAZDA	6 I	Estate	With/Without Railings	2002	2007	CLA610	FIX POINT
MAZDA	6 I	Estate	With Railings	2002	2007	CLA951	OPEN RAILS
MAZDA	6 II	4 Door		2008	2012	CLA610	FIX POINT
MAZDA	6 II	5 Door		2008	2012	CLA610	FIX POINT
MAZDA	6 II	Estate	With Railings	2008	2012	CLA951	OPEN RAILS
MAZDA	626 V	Estate		1998	2002	CLA951	OPEN RAILS
MAZDA	Demio	MPV		1996	2003	CLA951	OPEN RAILS
MERCEDES	190	4 Door		1982	1993	CLA007	NORMAL FIXING CLAMP
MERCEDES	200	4 Door		1985	1995	CLA007	NORMAL FIXING CLAMP
MERCEDES	Classe A	5 Door	Short wheelbase	1998	2004	CLA004	NORMAL FIXING CLAMP
MERCEDES	Classe A	5 Door	Long wheelbase	2001	2004	CLA005	NORMAL FIXING CLAMP
MERCEDES	Classe A	5 Door		2005	2012	CLA098	FIX POINT
MERCEDES	Classe A Coupč	3 Door		2005	2012	CLA098	FIX POINT
MERCEDES	Classe B	MPV		2005	2011	CLA098	FIX POINT
MERCEDES	Classe C	4 Door		1993	2000	CLA007	NORMAL FIXING CLAMP
MERCEDES	Classe C	Estate	With Railings	1996	2001	CLA951	OPEN RAILS
MERCEDES	Classe C	4 Door		2000	2007	CLA007	NORMAL FIXING CLAMP
MERCEDES	Classe C	Estate	With Railings	2001	2007	CLA951	OPEN RAILS
MERCEDES	Classe C	Estate	With Railings	2007	2014	CLA951	OPEN RAILS
MERCEDES	Classe E	Estate	With Railings	1985	1995	CLA951	OPEN RAILS
MERCEDES	Classe E	4 Door		1995	2001	CLA007	NORMAL FIXING CLAMP
MERCEDES	Classe E	Estate	With Railings	1996	2002	CLA951	OPEN RAILS
MERCEDES	Classe E	4 Door		2002	2008	CLA007	NORMAL FIXING CLAMP



Manufacturer	Model	Body Type	Additional Information	Registration		Part No.	Fixpoints
				From	To		
MERCEDES	Classe E	Estate	With Railings	2003	2009	CLA951	OPEN RAILS
MERCEDES	Classe E	Estate	With Railings	2009	2016	CLA951	OPEN RAILS
MERCEDES	GLA	SUV	Integrated Rails	2013		CLA962	INTEGRATED RAILS
MERCEDES	GLC	SUV	Integrated Rails	2015		CLA962	INTEGRATED RAILS
MINI	Countryman	5 Door	Integrated Rails	2010	2017	CLA962	INTEGRATED RAILS
MITSUBISHI	ASX	SUV	Integrated Rails	2010		CLA962	INTEGRATED RAILS
MITSUBISHI	Outlander III	SUV	Integrated Rails	2012		CLA962	INTEGRATED RAILS
MITSUBISHI	Pajero IV	SUV	With Railings	2006		CLA951	OPEN RAILS
MITSUBISHI	Pajero Pinin	SUV		2000	2006	CLA951	OPEN RAILS
MITSUBISHI	Space Runner	MPV		1991	2002	CLA951	OPEN RAILS
MITSUBISHI	Space Wagon	MPV		1991	1998	CLA951	OPEN RAILS
MITSUBISHI	Space Wagon	MPV		1998	2004	CLA951	OPEN RAILS
NISSAN	Almera I	5 Door		1995	2000	CLA018	NORMAL FIXING CLAMP
NISSAN	Almera II	5 Door		2000	2006	CLA018	NORMAL FIXING CLAMP
NISSAN	Almera Tino	MPV		2000	2006	CLA018	NORMAL FIXING CLAMP
NISSAN	Juke	SUV		2010		CLA074	NORMAL FIXING CLAMP
NISSAN	Micra II	5 Door		1992	2003	CLA004	NORMAL FIXING CLAMP
NISSAN	Micra III	5 Door		2003	2010	CLA057	NORMAL FIXING CLAMP
NISSAN	Murano I	SUV	With Railings	2003	2007	CLA951	OPEN RAILS
NISSAN	Murano II	SUV	With Railings	2008		CLA951	OPEN RAILS
NISSAN	Note I	MPV		2006	2013	CLA070	NORMAL FIXING CLAMP
NISSAN	Note II	MPV	With Railings	2013		CLA120	NORMAL FIXING CLAMP
NISSAN	Primera	4 Door		1990	1996	CLA018	NORMAL FIXING CLAMP
NISSAN	Primera	5 Door		1990	1996	CLA018	NORMAL FIXING CLAMP
NISSAN	Primera	Estate		1990	1997	CLA951	OPEN RAILS
NISSAN	Primera	5 Door		1997	2001	CLA018	NORMAL FIXING CLAMP
NISSAN	Primera	Estate		1997	2001	CLA951	OPEN RAILS
NISSAN	Pulsar	5 Door		2014		CLA022	NORMAL FIXING CLAMP
NISSAN	Qashqai I	SUV	With/Without Railings	2007	2014	CLA123	NORMAL FIXING CLAMP
NISSAN	Qashqai I / Qashqai I +2	SUV	With Railings	2007	2014	CLA951	OPEN RAILS
NISSAN	Qashqai II	SUV	With Railings	2013		CLA962	INTEGRATED RAILS
NISSAN	X- Trail I	SUV		2001	2007	CLA075	FIX POINT
NISSAN	X- Trail II	SUV		2007	2014	CLA075	FIX POINT
NISSAN	X- Trail III	SUV	With Railings	2014		CLA951	OPEN RAILS
PEUGEOT	106	5 Door		1992	2004	CLA004	NORMAL FIXING CLAMP
PEUGEOT	107	5 Door		2005	2014	CLA014	NORMAL FIXING CLAMP
PEUGEOT	108	5 Door	(No TOP! version)	2014		CLA014	NORMAL FIXING CLAMP
PEUGEOT	205	5 Door		1984	1994	CLA004	NORMAL FIXING CLAMP
PEUGEOT	206	3 Door		1998	2009	CLA038	NORMAL FIXING CLAMP
PEUGEOT	206	5 Door		1998	2009	CLA039	NORMAL FIXING CLAMP
PEUGEOT	207	3 Door		2006	2012	CLA085	FIX POINT
PEUGEOT	207	5 Door		2006	2012	CLA085	FIX POINT
PEUGEOT	207	Estate		2007	2013	CLA951	OPEN RAILS
PEUGEOT	208	3 Door		2012		CLA128	NORMAL FIXING CLAMP
PEUGEOT	208	5 Door		2012		CLA127	NORMAL FIXING CLAMP
PEUGEOT	306	Estate	With Railings	1994	2002	CLA951	OPEN RAILS
PEUGEOT	307	3 Door		2001	2008	CLA601	FIX POINT
PEUGEOT	307	5 Door		2001	2008	CLA601	FIX POINT
PEUGEOT	307	Estate	With Railings	2002	2008	CLA951	OPEN RAILS
PEUGEOT	308 I	3 Door		2007	2013	CLA085	FIX POINT
PEUGEOT	308 I	5 Door		2007	2013	CLA085	FIX POINT

Manufacturer	Model	Body Type	Additional Information	Registration		Part No.	Fixpoints
				From	To		
PEUGEOT	308 I	Estate	With Railings	2008	2014	CLA951	OPEN RAILS
PEUGEOT	308 II	5 Door		2013		CLA131	NORMAL FIXING CLAMP
PEUGEOT	308 II	Estate	With/Without Railings	2014		CLA131	NORMAL FIXING CLAMP
PEUGEOT	308 II	Estate	Integrated Rails	2014		CLA962	INTEGRATED RAILS
PEUGEOT	405	4 Door		1987	1996	CLA003	NORMAL FIXING CLAMP
PEUGEOT	405	Estate	With Railings	1987	1997	CLA951	OPEN RAILS
PEUGEOT	406	4 Door		1995	2004	CLA023	NORMAL FIXING CLAMP
PEUGEOT	406	Estate	With Railings	1996	2004	CLA951	OPEN RAILS
PEUGEOT	407	4 Door		2004	2011	CLA085	FIX POINT
PEUGEOT	407	Estate	With Railings	2004	2011	CLA951	OPEN RAILS
PEUGEOT	508	Estate	Integrated Rails	2011		CLA962	INTEGRATED RAILS
PEUGEOT	605	4 Door		1989	1999	CLA022	NORMAL FIXING CLAMP
PEUGEOT	607	4 Door		2000	2010	CLA601	FIX POINT
PEUGEOT	806	MPV		1994	2002	CLA021	SPECIAL FIXING CLAMP
PEUGEOT	1007	MPV	With Railings	2005	2010	CLA951	OPEN RAILS
PEUGEOT	206 Plus	3 Door		2009	2012	CLA038	NORMAL FIXING CLAMP
PEUGEOT	206 Plus	5 Door		2009	2012	CLA039	NORMAL FIXING CLAMP
PEUGEOT	207 Plus	3 Door		2012		CLA085	FIX POINT
PEUGEOT	207 Plus	5 Door		2012		CLA085	FIX POINT
PEUGEOT	Partner Tepee	MPV-VAN	With Railings	2008		CLA951	OPEN RAILS
PEUGEOT	Ranch I	MPV-VAN		1996	2008	CLA081	NORMAL FIXING CLAMP
RENAULT	21	4 Door		1986	1994	CLA018	NORMAL FIXING CLAMP
RENAULT	21	5 Door		1986	1994	CLA018	NORMAL FIXING CLAMP
RENAULT	21 Nevada	Estate	With/Without Railings	1986	1994	CLA018	NORMAL FIXING CLAMP
RENAULT	Clio II	3 Door		1998	2012	CLA036	NORMAL FIXING CLAMP
RENAULT	Clio II	5 Door		1998	2012	CLA018	NORMAL FIXING CLAMP
RENAULT	Clio II Storia	3 Door		2005	2012	CLA036	NORMAL FIXING CLAMP
RENAULT	Clio II Storia	5 Door		2005	2012	CLA018	NORMAL FIXING CLAMP
RENAULT	Clio III	3 Door		2005	2014	CLA091	SPECIAL FIX POINT
RENAULT	Clio III	5 Door		2005	2014	CLA056	SPECIAL FIX POINT
RENAULT	Clio III Sportour / Grandtour	Estate	With Railings	2008	2012	CLA951	OPEN RAILS
RENAULT	Clio IV Sporter / Grandtour	Estate		2013		CLA951	OPEN RAILS
RENAULT	Espace II	MPV	No orig. points	1991	1996	CLA022	NORMAL FIXING CLAMP
RENAULT	Espace III	MPV	With orig. points	1996	2002	CLA021	SPECIAL FIXING CLAMP
RENAULT	Espace III	MPV	No orig. points	1996	2002	CLA022	NORMAL FIXING CLAMP
RENAULT	Grand Modus	MPV		2008	2013	CLA056	SPECIAL FIX POINT
RENAULT	Grand Scenic II	MPV	7 seats/no sun roof	2004	2009	CLA612	FIX POINT
RENAULT	Grand Scenic III	MPV	7 seats	2009	2016	CLA108	NORMAL FIXING CLAMP
RENAULT	Grand Scenic III	MPV	7 seats/With Railings	2013	2016	CLA951	OPEN RAILS
RENAULT	Koleos	SUV		2008		CLA951	OPEN RAILS
RENAULT	Laguna I	4 Door		1994	2000	CLA007	NORMAL FIXING CLAMP
RENAULT	Laguna I	Estate	With Railings	1995	2001	CLA951	OPEN RAILS
RENAULT	Laguna II	5 Door		2001	2007	CLA018	NORMAL FIXING CLAMP
RENAULT	Laguna II Sportour / Grandtour	Estate	With Railings	2001	2007	CLA951	OPEN RAILS
RENAULT	Laguna III	5 Door		2007	2015	CLA105	NORMAL FIXING CLAMP
RENAULT	Laguna III Sportour / Grandtour	Estate	With Railings	2007	2015	CLA951	OPEN RAILS
RENAULT	Megane I	Estate		1999	2003	CLA001	SPECIAL FIXING CLAMP
RENAULT	Megane II	3 Door	No sun roof	2002	2008	CLA608	FIX POINT

Manufacturer	Model	Body Type	Additional Information	Registration		Part No.	Fixpoints
				From	To		
RENAULT	Megane II	5 Door	No sun roof	2002	2008	CLA608	FIX POINT
RENAULT	Megane II	4 Door	No sun roof	2003	2008	CLA608	FIX POINT
RENAULT	Megane II Sportour / Grandtour	Estate	With Railings	2003	2009	CLA951	OPEN RAILS
RENAULT	Megane III	5 Door		2008	2016	CLA108	NORMAL FIXING CLAMP
RENAULT	Megane III Coupč	3 Door		2009	2016	CLA109	NORMAL FIXING CLAMP
RENAULT	Megane III Sportour / Grandtour	Estate	With Railings	2009	2016	CLA951	OPEN RAILS
RENAULT	Modus	MPV		2004	2013	CLA056	SPECIAL FIX POINT
RENAULT	Safrane	5 Door		1992	2000	CLA018	NORMAL FIXING CLAMP
RENAULT	Scenic II	MPV	5 seats/no sun roof	2003	2009	CLA612	FIX POINT
RENAULT	Scenic II Conquest	MPV	With Railings	2007	2009	CLA951	OPEN RAILS
RENAULT	Scenic III / Scenic III X-MOD	MPV	5 seats/With/Without Railings	2009	2016	CLA108	NORMAL FIXING CLAMP
RENAULT	Scenic III / Scenic III X-MOD	MPV	5 seats/With Railings	2013	2016	CLA951	OPEN RAILS
ROVER	45	4 Door		2000	2005	CLA014	NORMAL FIXING CLAMP
ROVER	45	5 Door		2000	2005	CLA014	NORMAL FIXING CLAMP
ROVER	75	4 Door		1999	2005	CLA005	NORMAL FIXING CLAMP
ROVER	400	4 Door		1995	1999	CLA014	NORMAL FIXING CLAMP
ROVER	400	5 Door		1995	1999	CLA014	NORMAL FIXING CLAMP
ROVER	600	4 Door		1993	1999	CLA005	NORMAL FIXING CLAMP
SAAB	9000	4 Door		1985	1998	CLA002	SPECIAL FIXING CLAMP
SAAB	9.5 Wagon	Estate	With Railings	1998	2010	CLA951	OPEN RAILS
SAAB	900 II	5 Door		1993	1998	CLA002	SPECIAL FIXING CLAMP
SAAB	9-5 I	4 Door		1997	2002	CLA002	SPECIAL FIXING CLAMP
SEAT	Alhambra II	MPV	With Railings	2010		CLA962	INTEGRATED RAILS
SEAT	Altea	MPV		2004	2009	CLA022	NORMAL FIXING CLAMP
SEAT	Altea	MPV		2009		CLA022	NORMAL FIXING CLAMP
SEAT	Altea Freetrack	MPV	Integrated Rails	2007		CLA962	INTEGRATED RAILS
SEAT	Altea XL	MPV	Integrated Rails	2006		CLA962	INTEGRATED RAILS
SEAT	Arosa	3 Door		1997	2004	CLA005	NORMAL FIXING CLAMP
SEAT	Cordoba I	3 Door		1993	1999	CLA053	SPECIAL FIXING CLAMP
SEAT	Cordoba I	4 Door		1993	1999	CLA053	SPECIAL FIXING CLAMP
SEAT	Cordoba I	3 Door		1999	2002	CLA053	SPECIAL FIXING CLAMP
SEAT	Cordoba I	4 Door		1999	2002	CLA053	SPECIAL FIXING CLAMP
SEAT	Cordoba II	4 Door		2002	2009	CLA066	NORMAL FIXING CLAMP
SEAT	Ibiza II	3 Door		1993	1998	CLA053	SPECIAL FIXING CLAMP
SEAT	Ibiza II	5 Door		1993	1998	CLA053	SPECIAL FIXING CLAMP
SEAT	Ibiza II	3 Door		1999	2002	CLA053	SPECIAL FIXING CLAMP
SEAT	Ibiza II	5 Door		1999	2002	CLA053	SPECIAL FIXING CLAMP
SEAT	Ibiza III	3 Door		2002	2009	CLA066	NORMAL FIXING CLAMP
SEAT	Ibiza III	5 Door		2002	2009	CLA066	NORMAL FIXING CLAMP
SEAT	Ibiza ST	Estate	Integrated Rails	2010		CLA962	INTEGRATED RAILS
SEAT	Ibiza IV	5 Door		2008	2017	CLA047	NORMAL FIXING CLAMP
SEAT	Ibiza IV Sportcoupč	3 Door		2008	2017	CLA106	NORMAL FIXING CLAMP
SEAT	Inca	VAN		1995	2003	CLA052	NORMAL FIXING CLAMP
SEAT	Leon I	5 Door		1999	2005	CLA602	FIX POINT
SEAT	Leon ST	Estate	Integrated Rails	2013		CLA962	INTEGRATED RAILS
SEAT	Leon X-PERIENCE	Estate	Integrated Rails	2015		CLA962	INTEGRATED RAILS
SEAT	Toledo I	4 Door		1991	1998	CLA001	SPECIAL FIXING CLAMP
SEAT	Toledo II	4 Door		2000	2004	CLA602	FIX POINT
SEAT	Toledo III	5 Door		2004	2009	CLA022	NORMAL FIXING CLAMP

Manufacturer	Model	Body Type	Additional Information	Registration		Part No.	Fixpoints
				From	To		
SKODA	Fabia I	4 Door		1999	2007	CLA052	NORMAL FIXING CLAMP
SKODA	Fabia I	5 Door		1999	2007	CLA052	NORMAL FIXING CLAMP
SKODA	Fabia I Wagon	Estate	With Railings	2000	2007	CLA951	OPEN RAILS
SKODA	Fabia II	5 Door		2007	2015	CLA101	NORMAL FIXING CLAMP
SKODA	Fabia II Wagon	Estate	With Railings	2007	2015	CLA951	OPEN RAILS
SKODA	Fabia II Scout	Estate	With Railings	2009		CLA951	OPEN RAILS
SKODA	Felicia I	4 Door		1994	1997	CLA014	NORMAL FIXING CLAMP
SKODA	Felicia II	4 Door		1998	2001	CLA014	NORMAL FIXING CLAMP
SKODA	Felicia Wagon	Estate	With Railings	1995	2001	CLA951	OPEN RAILS
SKODA	Octavia I	4 Door		1996	2004	CLA052	NORMAL FIXING CLAMP
SKODA	Octavia I	Estate	With Railings	1998	2004	CLA951	OPEN RAILS
SKODA	Octavia II	4 Door		2004	2012	CLA087	NORMAL FIXING CLAMP
SKODA	Octavia II	Estate	With Railings	2004	2012	CLA951	OPEN RAILS
SKODA	Octavia III	Estate	With Railings	2013		CLA951	OPEN RAILS
SKODA	Roomster	SUV	With Railings	2006		CLA951	OPEN RAILS
SKODA	Superb I	4 Door		2002	2007	CLA007	NORMAL FIXING CLAMP
SKODA	Superb II	4 Door		2008	2015	CLA064	NORMAL FIXING CLAMP
SKODA	Superb III	4 Door		2015		CLA047	NORMAL FIXING CLAMP
SKODA	Superb II Wagon	Estate	With Railings	2009	2015	CLA951	OPEN RAILS
SSANGYONG	Korando	SUV	With Railings	1996	2006	CLA951	OPEN RAILS
SSANGYONG	Kyron	SUV	With Railings	2005		CLA951	OPEN RAILS
SSANGYONG	Rexton I	SUV	With Railings	2006	2006	CLA951	OPEN RAILS
SSANGYONG	Rexton II	SUV	With Railings	2006	2012	CLA951	OPEN RAILS
SSANGYONG	Rodius	SUV	With Railings	2005		CLA951	OPEN RAILS
SUBARU	Forester IV	SUV		2012		CLA951	OPEN RAILS
SUBARU	Impreza Compact Wagon	Estate	With Railings	1992	2000	CLA951	OPEN RAILS
SUBARU	Impreza Compact Wagon	Estate	With Railings	2000	2007	CLA951	OPEN RAILS
SUZUKI	Alto IV	5 Door		1994	2001	CLA004	NORMAL FIXING CLAMP
SUZUKI	Alto V	5 Door		2002	2008	CLA005	NORMAL FIXING CLAMP
SUZUKI	Baleno Wagon	Estate	With Railings	1996	2002	CLA951	OPEN RAILS
SUZUKI	Ignis I	3 Door	With Railings	2000	2003	CLA951	OPEN RAILS
SUZUKI	Ignis I	5 Door	With Railings	2000	2003	CLA951	OPEN RAILS
SUZUKI	Ignis II	5 Door	With Railings	2003	2008	CLA951	OPEN RAILS
SUZUKI	Jimny	SUV	With Railings	1998		CLA951	OPEN RAILS
SUZUKI	Swift III	5 Door		2005	2010	CLA093	NORMAL FIXING CLAMP
SUZUKI	SX4	5 Door	With Railings	2006		CLA951	OPEN RAILS
SUZUKI	SX4 S-Cross	5 Door	Integrated Rails	2013		CLA962	INTEGRATED RAILS
TATA	Indigo	Estate	With Railings	2002		CLA951	OPEN RAILS
TOYOTA	Avensis	4 Door		1998	2002	CLA007	NORMAL FIXING CLAMP
TOYOTA	Avensis	5 Door		1998	2002	CLA007	NORMAL FIXING CLAMP
TOYOTA	Avensis	Estate	With Railings	1998	2002	CLA951	OPEN RAILS
TOYOTA	Avensis	4 Door		2003	2008	CLA007	NORMAL FIXING CLAMP
TOYOTA	Avensis	5 Door		2003	2008	CLA007	NORMAL FIXING CLAMP
TOYOTA	Avensis	Estate	With Railings	2003	2008	CLA951	OPEN RAILS
TOYOTA	Avensis Wagon	Estate		2009		CLA047	NORMAL FIXING CLAMP
TOYOTA	Aygo I	5 Door		2005	2014	CLA014	NORMAL FIXING CLAMP
TOYOTA	Aygo II	5 Door		2014		CLA014	NORMAL FIXING CLAMP
TOYOTA	Carina E	4 Door		1992	1998	CLA007	NORMAL FIXING CLAMP
TOYOTA	Carina E	5 Door		1992	1998	CLA007	NORMAL FIXING CLAMP
TOYOTA	Corolla	Estate	With Railings	1992	1997	CLA951	OPEN RAILS
TOYOTA	Corolla	Estate	With Railings	1997	2002	CLA951	OPEN RAILS

Manufacturer	Model	Body Type	Additional Information	Registration		Part No.	Fixpoints
				From	To		
TOYOTA	Corolla	5 Door		2002	2007	CLA022	NORMAL FIXING CLAMP
TOYOTA	Corolla	Estate	With Railings	2002	2007	CLA951	OPEN RAILS
TOYOTA	Corolla Verso	MPV	With/Without Railings	2001	2004	CLA007	NORMAL FIXING CLAMP
TOYOTA	Corolla Verso	MPV	With Railings	2001	2004	CLA951	OPEN RAILS
TOYOTA	Corolla Verso	MPV	With Railings	2004	2009	CLA951	OPEN RAILS
TOYOTA	Rav 4 I	SUV	With Railings	1994	2000	CLA951	OPEN RAILS
TOYOTA	Rav 4 II	SUV	With Railings	2000	2005	CLA951	OPEN RAILS
TOYOTA	Rav 4 III	SUV	With Railings	2006	2013	CLA951	OPEN RAILS
TOYOTA	Yaris	5 Door		1999	2005	CLA061	NORMAL FIXING CLAMP
TOYOTA	Yaris Verso	MPV	With Railings	1999	2005	CLA951	OPEN RAILS
VAUXHALL/OPEL	Antara	SUV		2006		CLA951	OPEN RAILS
VAUXHALL/OPEL	Astra F	Estate	With Railings	1991	1997	CLA951	OPEN RAILS
VAUXHALL/OPEL	Astra G	3 Door		1998	2004	CLA001	SPECIAL FIXING CLAMP
VAUXHALL/OPEL	Astra G	4 Door		1998	2004	CLA001	SPECIAL FIXING CLAMP
VAUXHALL/OPEL	Astra G	5 Door		1998	2004	CLA001	SPECIAL FIXING CLAMP
VAUXHALL/OPEL	Astra G	Estate	With/Without Railings	1998	2004	CLA001	SPECIAL FIXING CLAMP
VAUXHALL/OPEL	Astra G	Estate	With Railings	1998	2004	CLA951	OPEN RAILS
VAUXHALL/OPEL	Astra H	3 Door	No sun roof	2004	2010	CLA614	FIX POINT
VAUXHALL/OPEL	Astra H	4 Door	No sun roof	2004	2010	CLA614	FIX POINT
VAUXHALL/OPEL	Astra H	5 Door	No sun roof	2004	2010	CLA614	FIX POINT
VAUXHALL/OPEL	Astra H	Estate	Integrated Rails	2004	2010	CLA962	INTEGRATED RAILS
VAUXHALL/OPEL	Astra J	4 Door		2012		CLA078	SPECIAL FIX POINT
VAUXHALL/OPEL	Astra J	5 Door		2010	2015	CLA078	SPECIAL FIX POINT
VAUXHALL/OPEL	Astra J Sport Tourer	Estate	Integrated Rails	2011	2015	CLA962	INTEGRATED RAILS
VAUXHALL/OPEL	Calibra	3 Door		1990	1997	CLA001	SPECIAL FIXING CLAMP
VAUXHALL/OPEL	Corsa B	3 Door		1993	2000	CLA001	SPECIAL FIXING CLAMP
VAUXHALL/OPEL	Corsa B	5 Door		1993	2000	CLA001	SPECIAL FIXING CLAMP
VAUXHALL/OPEL	Corsa B	Estate	With Railings	1998	2001	CLA951	OPEN RAILS
VAUXHALL/OPEL	Corsa C	3 Door		2000	2006	CLA001	SPECIAL FIXING CLAMP
VAUXHALL/OPEL	Corsa C	5 Door		2000	2006	CLA001	SPECIAL FIXING CLAMP
VAUXHALL/OPEL	Corsa D	3 Door		2006	2014	CLA078	SPECIAL FIX POINT
VAUXHALL/OPEL	Corsa D	5 Door		2006	2014	CLA078	SPECIAL FIX POINT
VAUXHALL/OPEL	Insignia	4 Door		2009	2017	CLA095	NORMAL FIXING CLAMP
VAUXHALL/OPEL	Insignia Sports Tourer	Estate	Integrated Rails	2009	2017	CLA962	INTEGRATED RAILS
VAUXHALL/OPEL	Kadett E	Estate	With Railings	1984	1991	CLA951	OPEN RAILS
VAUXHALL/OPEL	Kadett E	3 Door		1988	1991	CLA001	SPECIAL FIXING CLAMP
VAUXHALL/OPEL	Kadett E	4 Door		1988	1991	CLA001	SPECIAL FIXING CLAMP
VAUXHALL/OPEL	Kadett E	5 Door		1988	1991	CLA001	SPECIAL FIXING CLAMP
VAUXHALL/OPEL	Kadett E	Estate		1988	1991	CLA001	SPECIAL FIXING CLAMP
VAUXHALL/OPEL	Meriva A	MPV		2003	2010	CLA078	SPECIAL FIX POINT
VAUXHALL/OPEL	Meriva B	MPV		2010		CLA078	SPECIAL FIX POINT
VAUXHALL/OPEL	Mokka	SUV	Integrated Rails	2012		CLA962	INTEGRATED RAILS
VAUXHALL/OPEL	Omega A	Estate	With Railings	1986	1993	CLA951	OPEN RAILS
VAUXHALL/OPEL	Omega B	Estate	With Railings	1994	2003	CLA951	OPEN RAILS
VAUXHALL/OPEL	Signum	5 Door	With/Without Railings	2003	2008	CLA078	SPECIAL FIX POINT
VAUXHALL/OPEL	Tigra	3 Door		1994	2001	CLA001	SPECIAL FIXING CLAMP
VAUXHALL/OPEL	Vectra A	4 Door		1988	1995	CLA002	SPECIAL FIXING CLAMP
VAUXHALL/OPEL	Vectra A	5 Door		1988	1995	CLA002	SPECIAL FIXING CLAMP
VAUXHALL/OPEL	Vectra B	4 Door		1996	2002	CLA002	SPECIAL FIXING CLAMP
VAUXHALL/OPEL	Vectra B	5 Door		1996	2002	CLA002	SPECIAL FIXING CLAMP
VAUXHALL/OPEL	Vectra B	Estate	With Railings	1996	2002	CLA951	OPEN RAILS
VAUXHALL/OPEL	Vectra C	4 Door		2002	2008	CLA078	SPECIAL FIX POINT

Manufacturer	Model	Body Type	Additional Information	Registration		Part No.	Fixpoints
				From	To		
VAUXHALL/OPEL	Vectra C	5 Door		2002	2008	CLA078	SPECIAL FIX POINT
VAUXHALL/OPEL	Vectra C	Estate		2002	2008	CLA078	SPECIAL FIX POINT
VAUXHALL/OPEL	Vectra C	Estate	Integrated Rails	2003	2005	CLA962	INTEGRATED RAILS
VAUXHALL/OPEL	Vectra C	Estate	Integrated Rails	2006	2008	CLA962	INTEGRATED RAILS
VAUXHALL/OPEL	Zafira B	MPV	Integrated Rails	2005	2015	CLA962	INTEGRATED RAILS
VAUXHALL/OPEL	Zafira B	MPV	With/Without Railings	2008	2011	CLA616	FIX POINT
VAUXHALL/OPEL	Zafira C	MPV	Integrated Rails	2011		CLA962	INTEGRATED RAILS
VOLKSWAGEN	Bora	4 Door		1998	2005	CLA034	NORMAL FIXING CLAMP
VOLKSWAGEN	Bora Variant	Estate		1999	2005	CLA951	OPEN RAILS
VOLKSWAGEN	Caddy II	VAN		1995	2003	CLA052	NORMAL FIXING CLAMP
VOLKSWAGEN	Cross Up!	5 Door	With Railings	2014		CLA962	INTEGRATED RAILS
VOLKSWAGEN	Golf II	3 Door		1983	1992	CLA014	NORMAL FIXING CLAMP
VOLKSWAGEN	Golf II	5 Door		1983	1992	CLA014	NORMAL FIXING CLAMP
VOLKSWAGEN	Golf III	3 Door		1991	1998	CLA053	SPECIAL FIXING CLAMP
VOLKSWAGEN	Golf III	5 Door		1991	1998	CLA053	SPECIAL FIXING CLAMP
VOLKSWAGEN	Golf III Variant	Estate		1993	1999	CLA951	OPEN RAILS
VOLKSWAGEN	Golf IV	5 Door		1997	2003	CLA034	NORMAL FIXING CLAMP
VOLKSWAGEN	Golf IV	3 Door		1998	2003	CLA040	NORMAL FIXING CLAMP
VOLKSWAGEN	Golf IV Variant	Estate		1999	2006	CLA951	OPEN RAILS
VOLKSWAGEN	Golf V	3 Door		2003	2009	CLA067	NORMAL FIXING CLAMP
VOLKSWAGEN	Golf V	5 Door		2003	2009	CLA064	NORMAL FIXING CLAMP
VOLKSWAGEN	Golf V Cross	MPV	With Railings	2007	2010	CLA951	OPEN RAILS
VOLKSWAGEN	Golf V Plus	MPV	With/Without Railings	2005	2006	CLA047	NORMAL FIXING CLAMP
VOLKSWAGEN	Golf V Plus	MPV	With/Without Railings	2007	2009	CLA047	NORMAL FIXING CLAMP
VOLKSWAGEN	Golf V Plus	MPV	With Railings	2005	2009	CLA951	OPEN RAILS
VOLKSWAGEN	Golf V Variant	Estate		2007	2009	CLA951	OPEN RAILS
VOLKSWAGEN	Golf VI	3 Door		2008	2012	CLA114	NORMAL FIXING CLAMP
VOLKSWAGEN	Golf VI	5 Door		2008	2012	CLA064	NORMAL FIXING CLAMP
VOLKSWAGEN	Golf VI Cross	MPV	With Railings	2010	2014	CLA951	OPEN RAILS
VOLKSWAGEN	Golf VI Plus	MPV	With Railings	2009	2014	CLA951	OPEN RAILS
VOLKSWAGEN	Golf VI Variant	Estate		2009	2013	CLA951	OPEN RAILS
VOLKSWAGEN	Golf VII	5 Door		2012		CLA138	NORMAL FIXING CLAMP
VOLKSWAGEN	Golf Sportsvan	MPV	With Railings	2014		CLA962	INTEGRATED RAILS
VOLKSWAGEN	Jetta V	4 Door		2005	2010	CLA047	NORMAL FIXING CLAMP
VOLKSWAGEN	Lupo	3 Door		1998	2005	CLA005	NORMAL FIXING CLAMP
VOLKSWAGEN	Passat IV	4 Door		1988	1997	CLA005	NORMAL FIXING CLAMP
VOLKSWAGEN	Passat IV Variant	Estate	With Railings	1988	1997	CLA951	OPEN RAILS
VOLKSWAGEN	Passat V	4 Door		1997	2000	CLA005	NORMAL FIXING CLAMP
VOLKSWAGEN	Passat V	4 Door		2000	2005	CLA005	NORMAL FIXING CLAMP
VOLKSWAGEN	Passat V Variant	Estate	With Railings	1997	2000	CLA951	OPEN RAILS
VOLKSWAGEN	Passat V Variant	Estate	With/Without Railings	2000	2005	CLA005	NORMAL FIXING CLAMP
VOLKSWAGEN	Passat V Variant	Estate	With Railings	2000	2005	CLA951	OPEN RAILS
VOLKSWAGEN	Passat VI	4 Door		2005	2010	CLA047	NORMAL FIXING CLAMP
VOLKSWAGEN	Passat VI Variant	Estate	With Railings	2005	2010	CLA951	OPEN RAILS
VOLKSWAGEN	Passat VII	4 Door		2010	2014	CLA047	NORMAL FIXING CLAMP
VOLKSWAGEN	Passat VII Alltrack	Estate	With Railings	2012	2014	CLA951	OPEN RAILS
VOLKSWAGEN	Passat VII Variant	Estate	With Railings	2010	2014	CLA951	OPEN RAILS
VOLKSWAGEN	Passat VIII Variant	Estate	Integrated Rails	2014		CLA962	INTEGRATED RAILS
VOLKSWAGEN	Polo III	3 Door		1994	1999	CLA052	NORMAL FIXING CLAMP
VOLKSWAGEN	Polo III	5 Door		1994	1999	CLA052	NORMAL FIXING CLAMP
VOLKSWAGEN	Polo III	3 Door		1999	2001	CLA052	NORMAL FIXING CLAMP
VOLKSWAGEN	Polo III	5 Door		1999	2001	CLA052	NORMAL FIXING CLAMP

Manufacturer	Model	Body Type	Additional Information	Registration		Part No.	Fixpoints
				From	To		
VOLKSWAGEN	Polo IV	3 Door		2001	2009	CLA063	NORMAL FIXING CLAMP
VOLKSWAGEN	Polo IV	5 Door		2001	2009	CLA064	NORMAL FIXING CLAMP
VOLKSWAGEN	Polo V	3 Door		2009		CLA113	NORMAL FIXING CLAMP
VOLKSWAGEN	Polo V	5 Door		2009		CLA112	NORMAL FIXING CLAMP
VOLKSWAGEN	Tiguan I	SUV	With Railings	2007	2016	CLA951	OPEN RAILS
VOLKSWAGEN	Vento	4 Door		1991	1998	CLA053	SPECIAL FIXING CLAMP
VOLVO	S40 I	4 Door		1995	2004	CLA005	NORMAL FIXING CLAMP
VOLVO	S40 II	4 Door		2004	2012	CLA022	NORMAL FIXING CLAMP
VOLVO	V40 I	Estate	With/Without Railings	1995	2004	CLA005	NORMAL FIXING CLAMP
VOLVO	V40	Estate	With Railings	1995	2004	CLA951	OPEN RAILS
VOLVO	V50	Estate	With/Without Railings	2004	2012	CLA022	NORMAL FIXING CLAMP
VOLVO	V50	Estate	With Railings	2004	2012	CLA951	OPEN RAILS
VOLVO	V60	Estate	Integrated Rails	2010		CLA962	INTEGRATED RAILS
VOLVO	XC60	SUV	Integrated Rails	2010		CLA962	INTEGRATED RAILS
VOLVO	XC90 I	SUV	With Railings	2002	2014	CLA951	OPEN RAILS

**EQUIP**  
*Styled in Italy*



Equip: Bury, England, UK BL9 7NY. CUSTOMER HELPLINE: Tel No: +44 (0) 161 764 5981  
Equip is a registered brand of Tetrosyl Ltd. [www.tetrosyl.com](http://www.tetrosyl.com)

